



# OmniPeek® Network Analyzer

Serving a dual role as both a portable network analysis solution and as a software console for OmniEngine™ software, OmniPeek® offers an intuitive, easy-to-use graphical interface that engineers can use to rapidly analyze and troubleshoot enterprise networks. OmniPeek provides centralized Expert Analysis for all networks under management. Using OmniPeek's intuitive user interface and "top-down" approach to visualizing network conditions, network engineers can quickly analyze faults from multiple network segments, drill down through multiple layers of analysis, and pinpoint problems that need correction.

Using OmniPeek, network engineers can:

- Analyze traffic from any local network segment, including 10GbE, Gigabit, Ethernet, and wireless segments, as well as any network segment configured with OmniEngine software
- Analyze and troubleshoot both data and multimedia traffic using one single product
- Monitor networks, application performance and multimedia in separate high-level views, or "Dashboards," and instantly drill down to see which traffic characteristics are affecting network performance
- Capture and analyze data from multiple local network adapters, multiple distributed OmniEngine software probes, or any combination of local and remote data
- Leverage your existing wireless network infrastructure by turning managed access points from Cisco or Aruba, and IDS/IPS wireless sensors from AirTight Networks, into packet capture devices and collect data from multiple channels simultaneously

- Add reports of wireless interference sources into OmniPeek's Summary Statistics, and set triggers on reported interference to troubleshoot interference problems as they occur
- Rely on real-time Expert Analysis to do the heavy lifting, performing analysis of all network traffic and reporting Expert events as they occur
- Receive alerts when specific Expert events occur, or when configured network policies are violated
- Change filters on the fly without having to stop and restart network traffic captures
- View packet-stream based analytics by conversation pair, instantly locating network events
- View web traffic, the most common data type on the network, in conversational flows based on client, server, web pages or web requests
- Ensure Voice and Video service quality by providing detailed data and visual displays of Voice and Video signaling, quality measurements
- Monitor MPLS and VLAN networks

## Unique Flexibility

Of all standalone network analysis products available today, only OmniPeek enables network engineers to monitor multiple parts of the network simultaneously—an important capability when engineers know there's a problem but don't know where it is.

## Visual Expert

The Visual Expert answers the question "Who's talking to who?" by providing comprehensive visual data about network, media and application traffic, along with expert diagnoses of common and not-so-



**Total Network Visibility**



**See Invisible Virtual Network Traffic**

## WildPackets' solutions enable businesses to

- Gain unprecedented visibility into networks and applications
- Accelerate find-to-fix times
- Discover and close network security gaps
- Maximize ROI on existing networks and applications
- Increase IT efficiency and responsiveness
- Reduce costs associated with network downtime and service degradation
- Reduce IT labor costs
- Increase end user productivity

common network problems. The Visual Expert makes it easier to understand what's happening on the network and how to remedy problems by providing a “top-down” view of network activity.

Visual Expert includes Packet Visualizer, payload reconstruction, a wide range of conversation-oriented graphs, optimization tuning by playing “what if” with key network parameters, packet by packet comparison between multiple saved capture files—very useful in comparing the traffic from the wireless and wired side of an access point, and a detailed summary panel.

### Expert Analysis

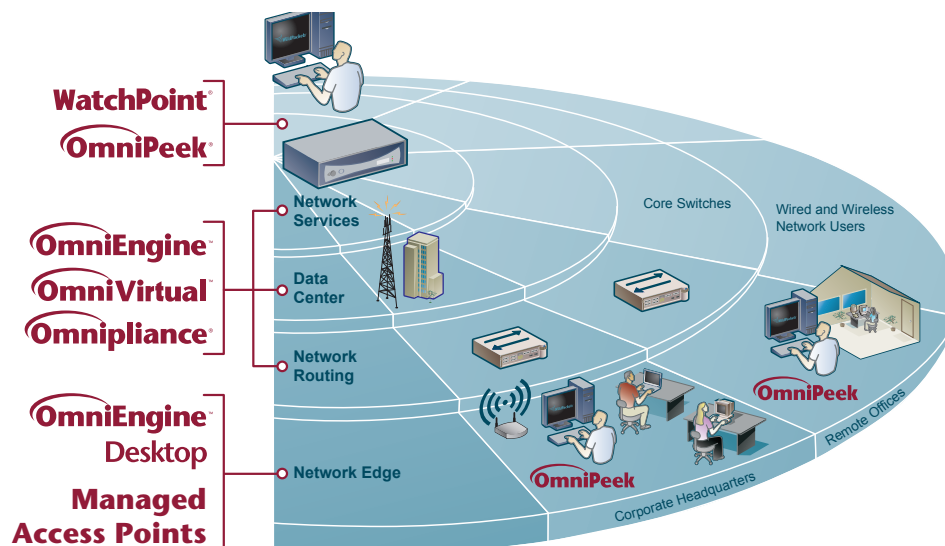
OmniPeek displays Expert Analysis diagnoses by conversation pair, so you can instantly identify where problems are occurring on the network.

### Voice and Video Analysis

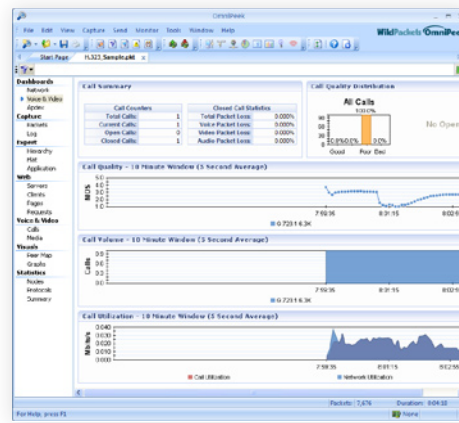
To deploy and maintain a successful



The Application Performance dashboard displays user satisfaction scores for the applications on your network.



Distributed analysis allows visibility into the entire network including Virtual Hosted Services and remote locations, as well as Managed APs from Cisco and Aruba.



Provides visibility into the entire VoIP and Video network on a single view.

Voice and Video over IP implementation, you need to be able to analyze and troubleshoot media traffic and the network the media traffic is running on, simultaneously. You need to be able to understand how other applications are affecting media traffic—and vice versa.

OmniPeek Enterprise provides users with the visibility and analysis they need in order to keep Voice and Video applications and non-media applications running optimally on the network. Users gain access to the entire Voice and Video over IP network in a single view, including a wealth of detailed call quality statistics, graphical representations of the media traffic and detailed diagnostic information. Specific voice and video media, signaling, and call playback capabilities are also included.

### MPLS and VLAN Analysis

For organizations adopting MPLS and

VLAN, the OmniPeek network analyzer captures MPLS and VLAN traffic and provides important statistics, such as total packets and total bytes per MPLS/VLAN. All MPLS/VLAN statistics can be graphed over time providing a visual view of the MPLS/VLAN network to the user. Alarms can be set on these statistics as well notifying the administrator as soon as a problem occurs in the network.

### On-the-Fly Filters

You shouldn't have to stop your analysis to change what you're looking at. OmniPeek enables you to create filters and apply them immediately. The WildPackets “select related” feature selects the packets relevant to a particular node, protocol, conversation, or expert diagnosis, with a simple right click of the mouse. Features like this significantly reduce the time needed to find and fix problems. Similar operations often take a dozen or more steps in other analyzers.

### Alarms and Notifications

Using its advanced Alarms and Notifications, OmniPeek uncovers hard-to-diagnose network problems and notifies the occurrence of the issues immediately. OmniPeek alarms query a specified monitor statistics function once per second, testing for user-specified problem and resolution conditions. Upon matching any of these tests, the alarm function sends a notification of user-specified severity. Level of severity can be set to indicate the importance of notification. Notification can be sent as Log, Email, Execute, Sound, Syslog, and SNMP Trap.

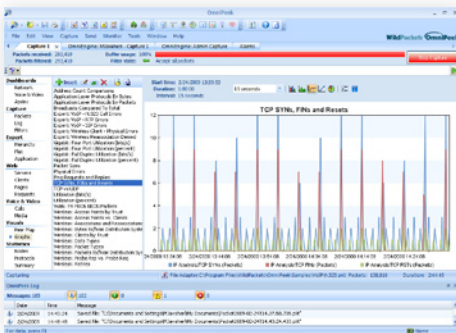
### Global Real-Time Troubleshooting

OmniPeek extends real-time troubleshooting to network segments around the world, delivering Expert Analysis, detailed Node, Protocol, and Network Summary Statistics, and even packet decoding, on multiple segments, by multiple users, in real time. From one application, a network engineer can cost-effectively troubleshoot locally view OmniEngine Expert Analysis and other detailed statistics on OmniEngines down the hall, across the country, or around the globe.

## Top-Down View

OmniPeek provides a high-level view of network traffic, application performance, and multimedia using its comprehensive Dashboard view. Dashboards display important data that every network engineer needs to know about the network without spending lots of time analyzing the captured data.

With OmniPeek, you can also drill down and see which nodes your top talkers are talking to. Click again and see what protocols and sub protocols are in use. IT staff of all levels of technical ability can view this information instantly, anywhere on the network. OmniPeek also provides a wide range of reports in various output formats to keep executives informed of overall network performance.



Rich, in-depth data can be formatted for real-time analysis or reporting.

## Network Coverage

With the Ethernet, Gigabit, 10GbE, and wireless capabilities, you can now effectively monitor and troubleshoot services running on your entire network. Using the same solution for troubleshooting wired and wireless networks reduces the total cost of ownership, and illuminates network problems which would otherwise be difficult to detect.

## OmniPeek Basic

OmniPeek Basic is a full-featured, stand-alone network analysis tool. This product is ideal for consulting engineers who solve network problems for others, or for small businesses or remote offices where analysis is confined to a small number of interfaces, with no high-speed (10 Gigabit or Gigabit) links and a limited number of

employees on the network. OmniPeek Basic can collect network data from a single interface.

## OmniPeek Professional

OmniPeek Professional expands the capabilities of OmniPeek Basic, extending its reach to all small businesses and corporate workgroups, regardless of size of the network or the number of employees. OmniPeek Professional provides support for multiple network interfaces while still supporting up to 2 OmniEngines acting as both a full-featured network analyzer and a console for remote network analysis. There is also no limit to the number of network flows that can be analyzed, so groups of any size can be supported.

## OmniPeek Enterprise

OmniPeek Enterprise is WildPackets' flagship product. It combines all of the features of the OmniPeek Distributed Analysis Suite in one product, including support for local captures from multiple interfaces and connections to an unlimited number of distributed OmniEngines. It supports data collection from any network topology, including 10 Gigabit and Gigabit networks, and local matrix switches. OmniPeek Enterprise also provides advanced Voice and Video over IP functionality including signaling and media analysis of voice and video, VoIP playback, voice and video Expert Analysis, Visual Expert, and more. OmniPeek Enterprise is ideal for IT organizations responsible for network analysis and network service level agreements (SLAs) for the entire organization. A license of OmniPeek Enterprise should be considered for each location that will be supported by a network engineering professional.

## OmniPeek Connect

OmniPeek Connect manages an organization's OmniEngines, our distributed network probes, and provides all the console capabilities of OmniPeek Enterprise. OmniPeek Connect is ideal for Network Operations Center (NOC) deployments as it can monitor distributed analysis solutions at multiple remote locations, with no need for local captures at the console location.

## WildPackets OmniPeek Distributed Analysis Suite

The OmniPeek Distributed Analysis Suite gives network engineers real-time visibility into every part of the network simultaneously from a single interface, including Ethernet, Gigabit, 10 Gigabit, 802.11a/b/g/n wireless, VoIP, and Video to remote offices. Using the OmniPeek Distributed Analysis Suite, network engineers can rapidly troubleshoot faults and fix problems to maximize network uptime and user satisfaction.

The OmniPeek Distributed Analysis Suite comprises OmniPeek network analyzers and consoles, as well as distributed OmniEngine software probes, Omnipliance Network Recorders, and OmniAdapter Analysis Cards, which continuously capture, analyze and store data at remote locations on the network.

## About WildPackets, Inc.

WildPackets develops hardware and software solutions that drive network performance, enabling organizations of all sizes to analyze, troubleshoot, optimize, and secure their wired and wireless networks. WildPackets products are sold in over 60 countries and deployed in all industrial sectors. Customers include Boeing, Chrysler, Fidelity, Motorola, Nationwide, and over 80 percent of the Fortune 1000. WildPackets is a Cisco Technical Development Partner (CTDP). For more information, visit [www.wildpackets.com](http://www.wildpackets.com).



1340 Treat Blvd, Suite 500  
Walnut Creek, CA 94597  
(925)937-3200  
fax (925)937-3211

[www.wildpackets.com](http://www.wildpackets.com)